



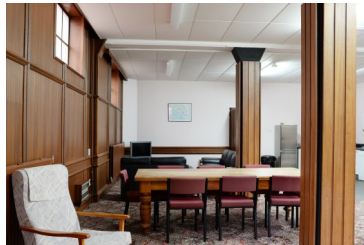
COMMON ROOMS



The Otago Common Room & Kitchen

The Otago Room is a shared common room for all guests staying at Burns Lodge to use. It includes cooking facilities, fridge/freezer, complimentary tea & coffee for guests. It can be reserved for groups but cannot be booked for exclusive use. This room is available to use for groups wanting to self-cater. Please discuss this with your event manager, use of this room for self-catering will incur a fee.

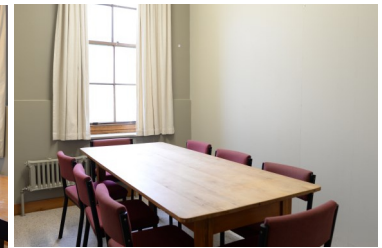
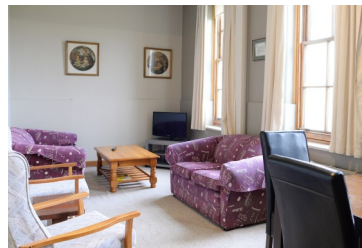
Early European settlers on the harbour in the 1830s used the Maori word Otago (North Island dialect equivalent, "Otakou") for the area. With the arrival of the largely Scottish settlers in 1848, the name was given to the area of New Zealand south of the Waitaki river. The discovery of gold in the province in the 1860s led to Otago becoming, for a period, the cultural and economic centre of New Zealand.



The Morkane Wing Common Room & Kitchen

The Morkane Wing Common Room is a shared common room for all guests staying at Burns Lodge to use. It includes cooking facilities, fridge/freezer, complimentary tea & coffee for guests. It can be reserved for groups but cannot be booked for exclusive use. This room is available to use for groups wanting to self-cater, please discuss this with your event manager. Use of this room for self-catering will incur a fee.

The first student at the newly opened seminary was Cecil Morkane, who would become Monsignor Morkane. After completing his training at Holy Cross, Manly & in Rome, he was ordained in 1907 and appointed curate at Lawrence. In 1910, he was appointed to the professorial staff at Holy Cross College and became rector in 1920, remaining in that position until the college was committed to the charge of the Vincentian Fathers in 1934.



DINING ROOMS



The Cluny Dining Room

The Cluny Dining Hall is used for catering purposes. All meals & refreshments for medium to large groups are served here.

The Cluny Sisters - of the order of St Joseph of Cluny founded in 1807 by Saint Anne-Marie Javouhey of France to educate & care for the children of the poor - first came to New Zealand in 1940 at the invitation of Bishop James Liston (previous rector of Holy Cross) & based themselves in Tauranga. The Cluny sisters came to Holy Cross Seminary in Mosgiel from Ireland in 1949 to provide domestic staff for the seminary. They continued this work for nearly 40 years.



The Executive Dining Room

The Executive Dining Room is used for catering purposes & as a private dining room. It comes complete with kitchenette & board table. It is suitable for small meetings or groups.

