



BURNS LODGE

AT HOLY CROSS CENTRE

HERITAGE ACCOMMODATION
EVENTS & CONFERENCES



MEDIUM TO LARGE FUNCTION ROOMS



The Holy Cross Community Hall

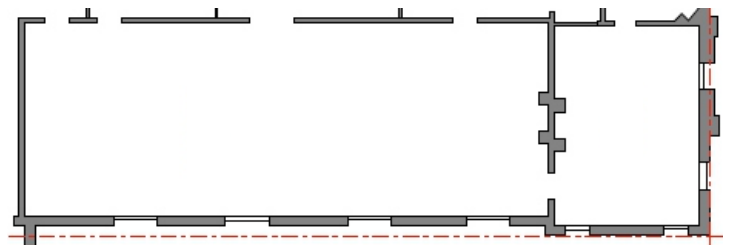
A multi-purpose function room suitable for conferences, presentations, meetings, dining & exhibitions

Size	Conference	Classroom	Dining	Standing
19m x 6.9m	150	50	120	200



Includes Break-Out Room

Suitable for small break-out groups or showroom for exhibitions

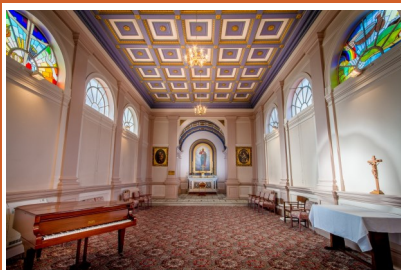
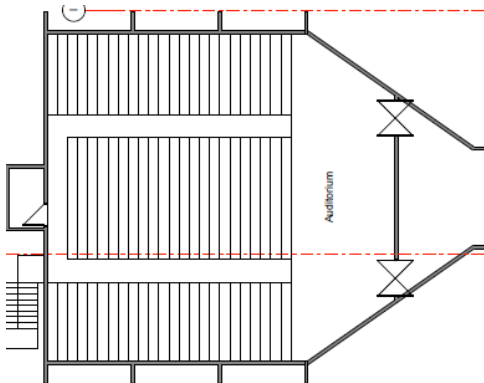
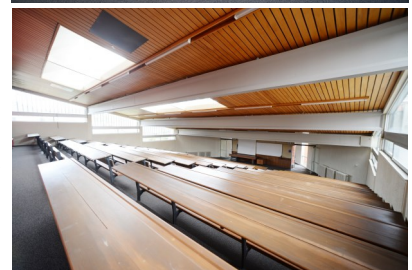
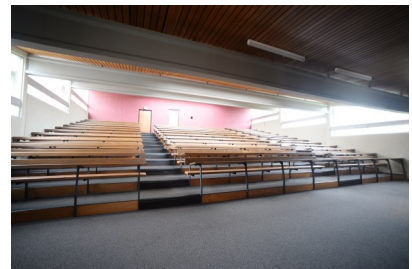


Size	Theatre
11.3m x 16m	250

The Lecture Theatre

The Lecture Theatre is ideal for presentations for medium to large groups

Designed by Dunedin architect, Edward John "Ted" McCoy, who also designed Aquinas College, the sanctuary for St Paul's Cathedral, the Richardson (formerly Hocken) Building, the Castle & Archway Theatres at the University of Otago & many other iconic buildings in Dunedin.



The Chapel

The Chapel seats up to 120, ideal for conference presentations, music recitals, guest speakers & suitable for gatherings of a reflective, spiritual or creative nature. The Chapel is a serene & consecrated space.

Size	Theatre
16m x 6.7m	100



Architect Commanditori Leonardi, the papal architect for Pope Leo XIII, designed the chapel in true Roman style, with semi-circular windows, marble altar, gilded copper ceiling and classic ionic pilasters. Bishop Michael Verdon laid the foundation stone in August 1900 & the chapel was blessed & opened on 3 May 1901.

